



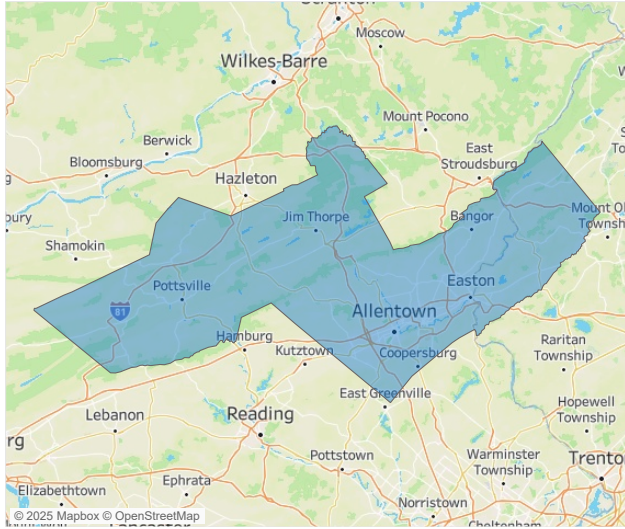
Jeff Adler  
Vice President  
[Jeff.Adler@yardi.com](mailto:Jeff.Adler@yardi.com)

#### Contacts

Razvan Cimpean  
SEO Engineer  
[Razvan-I.Cimpean@yardi.com](mailto:Razvan-I.Cimpean@yardi.com)

#### Allentown-Bethlehem

April 2025



**Allentown-Bethlehem** is the **94th** largest multifamily market with **35,088** completed units and **13,700** units in development, **2,128** of which have already broken ground.

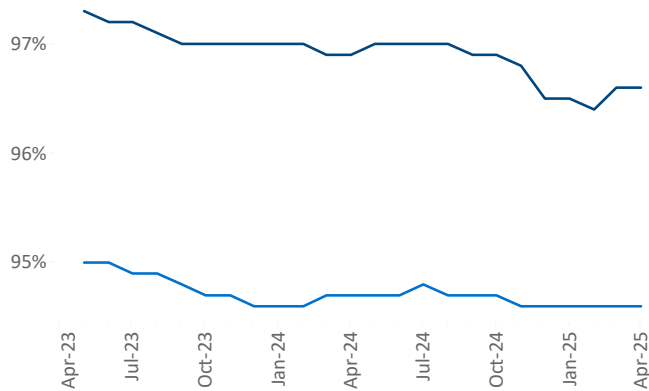
Advertised **rents** are at **\$1,742**, up **4.0% ▲** from the previous year placing Allentown-Bethlehem at **12th** overall in year-over-year rent growth.

Multifamily housing **demand** has been negative with **-265 ▼** units absorbed over the past twelve months. Absorption decreased by **-899 ▼** units from the previous year's absorption gain of **634 ▲** units.

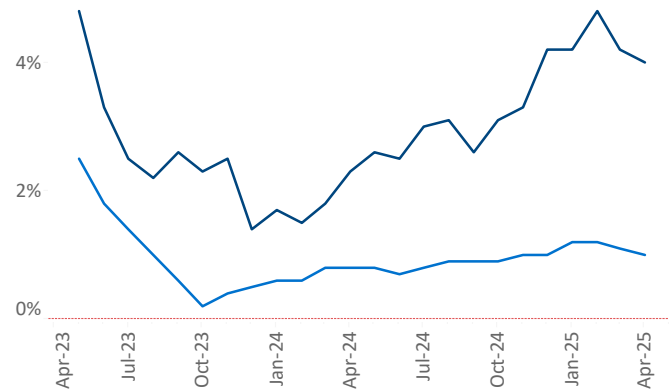
**Employment** in Allentown-Bethlehem has grown by **2.0% ▲** over the past 12 months, while hourly wages have risen by **2.3% ▲** YoY to **\$32.89** according to the *Bureau of Labor Statistics*.

■ Allentown-Bethlehem ■ National

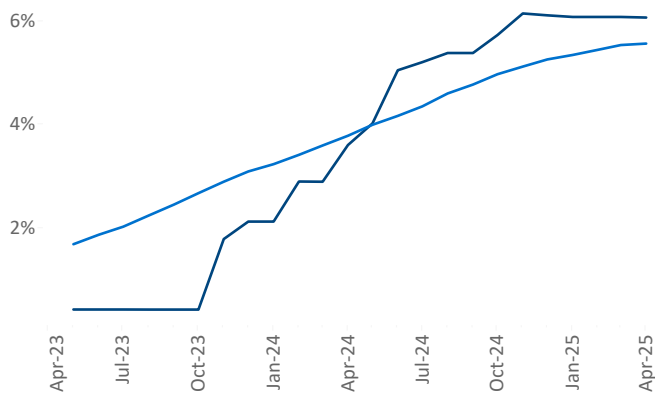
Occupancy



Rent Growth YoY



Units Under Construction as % of Stock



Absorbed Completions T12

