

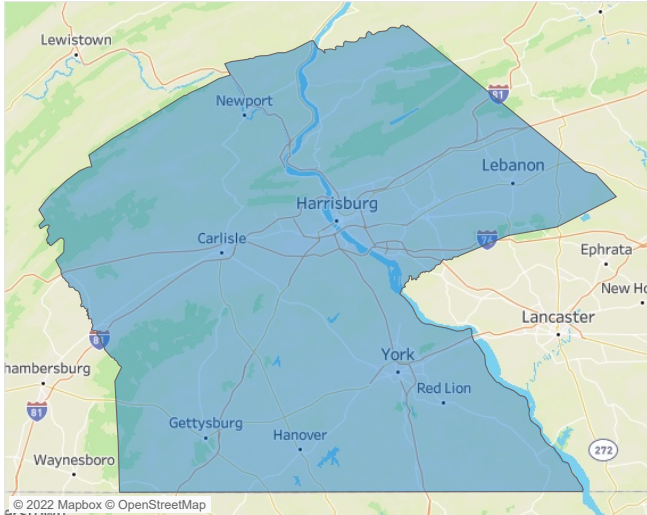


Jeff Adler
Vice President
Jeff.Adler@yardi.com

Contacts

Liliana Malai
Senior PPC Specialist
Liliana.Malai@yardi.com

Harrisburg
September 2022



Harrisburg is the **66th** largest multifamily market with **58,971** completed units and **12,205** units in development, **1,174** of which have already broken ground.

New lease asking **rents** are at **\$1,374**, up **8.8%** ▲ from the previous year placing Harrisburg at **71st** overall in year-over-year rent growth.

Multifamily housing **demand** has been negative with **-561** ▼ net units absorbed over the past twelve months. This is down **-1,298** ▼ units from the previous year's gain of **737** ▲ absorbed units.

Employment in Harrisburg has grown by **4.8%** ▲ over the past 12 months, while hourly wages have risen by **4.0%** ▲ YoY to **\$26.98** according to the *Bureau of Labor Statistics*.

