

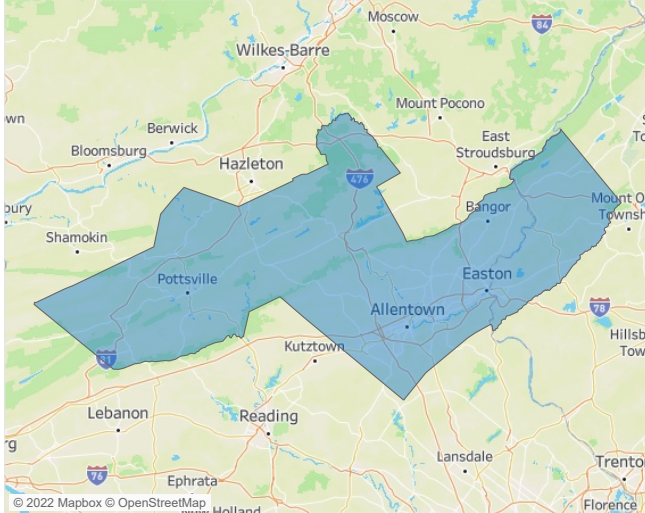


Jeff Adler  
Vice President  
[Jeff.Adler@yardi.com](mailto:Jeff.Adler@yardi.com)

#### Contacts

Liliana Malai  
Senior PPC Specialist  
[Liliana.Malai@yardi.com](mailto:Liliana.Malai@yardi.com)

## Allentown-Bethlehem August 2022



**Allentown-Bethlehem** is the **98th** largest multifamily market with **32,344** completed units and **6,910** units in development, **1,177** of which have already broken ground.

New lease asking **rents** are at **\$1,594**, up **14.1% ▲** from the previous year placing Allentown-Bethlehem at **14th** overall in year-over-year rent growth.

Multifamily housing **demand** has been positive with **34 ▲** net units absorbed over the past twelve months. This is down **-649 ▼** units from the previous year's gain of **683 ▲** absorbed units.

**Employment** in Allentown-Bethlehem has grown by **4.5% ▲** over the past 12 months, while hourly wages have risen by **1.9% ▲** YoY to **\$28.42** according to the *Bureau of Labor Statistics*.

