

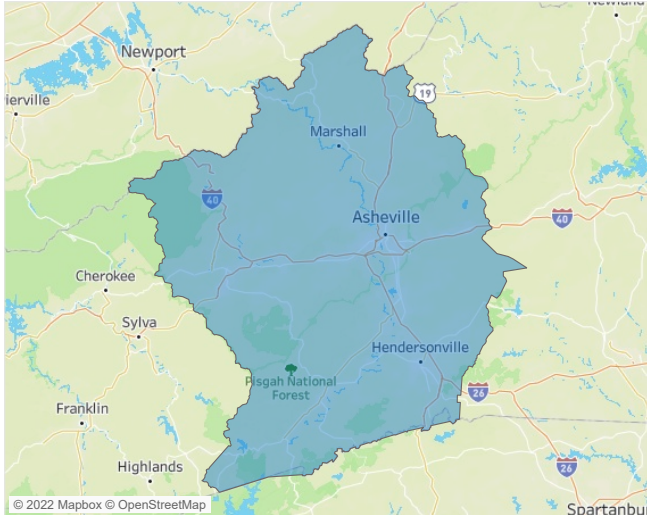


Jeff Adler  
Vice President  
[Jeff.Adler@yardi.com](mailto:Jeff.Adler@yardi.com)

#### Contacts

Liliana Malai  
Senior PPC Specialist  
[Liliana.Malai@yardi.com](mailto:Liliana.Malai@yardi.com)

Asheville  
June 2022



**Asheville** is the **112th** largest multifamily market with **20,084** completed units and **11,666** units in development, **2,415** of which have already broken ground.

New lease asking **rents** are at **\$1,631**, up **17.3% ▲** from the previous year placing Asheville at **16th** overall in year-over-year rent growth.

Multifamily housing **demand** has been positive with **368 ▲** net units absorbed over the past twelve months. This is down **-877 ▼** units from the previous year's gain of **1,245 ▲** absorbed units.

**Employment** in Asheville has grown by **4.2% ▲** over the past 12 months, while hourly wages have risen by **2.4% ▲** YoY to **\$27.31** according to the *Bureau of Labor Statistics*.

