

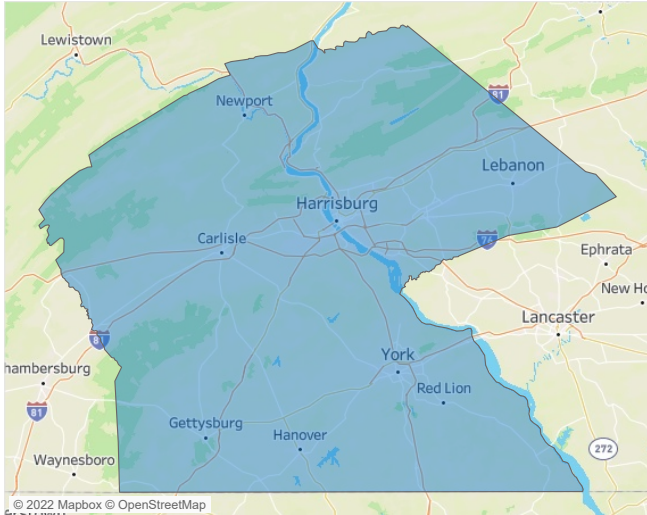


Jeff Adler
Vice President
Jeff.Adler@yardi.com

Contacts

Liliana Malai
Senior PPC Specialist
Liliana.Malai@yardi.com

Harrisburg
April 2022



Harrisburg is the **66th** largest multifamily market with **58,657** completed units and **11,503** units in development, **1,325** of which have already broken ground.

New lease asking **rents** are at **\$1,322**, up **10.4%** ▲ from the previous year placing Harrisburg at **84th** overall in year-over-year rent growth.

Multifamily housing **demand** has been rising with **946** ▲ net units absorbed over the past twelve months. This is down **-338** ▼ units from the previous year's gain of **1,284** ▲ absorbed units.

Employment in Harrisburg has grown by **4.0%** ▲ over the past 12 months, while hourly wages have risen by **2.2%** ▲ YoY to **\$26.27** according to the *Bureau of Labor Statistics*.

