

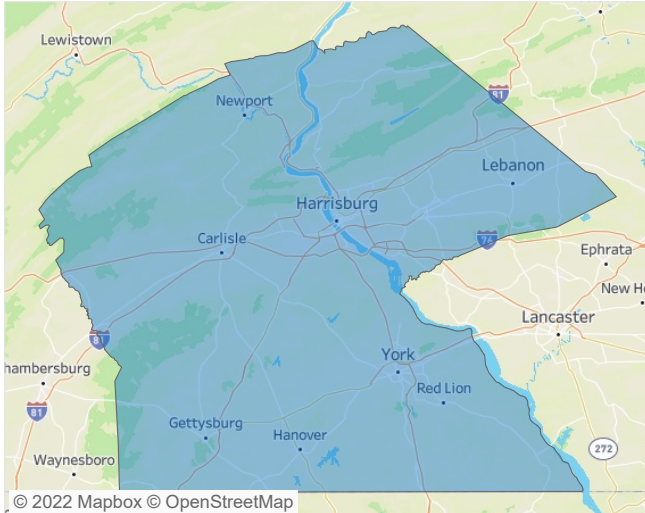


## Contacts

Jeff Adler  
Vice President  
[Jeff.Adler@yardi.com](mailto:Jeff.Adler@yardi.com)

Liliana Malai  
Senior PPC Specialist  
[Liliana.Malai@yardi.com](mailto:Liliana.Malai@yardi.com)

Harrisburg  
March 2022



**Harrisburg** is the **66th** largest multifamily market with **58,573** completed units and **11,412** units in development, **1,325** of which have already broken ground.

New lease asking **rents** are at **\$1,310**, up **10.5% ▲** from the previous year placing Harrisburg at **84th** overall in year-over-year rent growth.

Multifamily housing **demand** has been rising with **945 ▲** net units absorbed over the past twelve months. This is down **-402 ▼** units from the previous year's gain of **1,347 ▲** absorbed units.

**Employment** in Harrisburg has grown by **3.7% ▲** over the past 12 months, while hourly wages have risen by **2.0% ▲** YoY to **\$25.97** according to the *Bureau of Labor Statistics*.

