

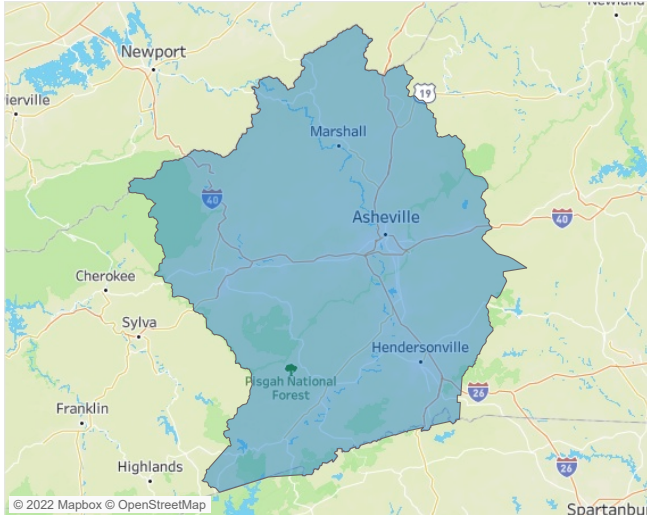


Jeff Adler
Vice President
Jeff.Adler@yardi.com

Contacts

Liliana Malai
Senior PPC Specialist
Liliana.Malai@yardi.com

Asheville
April 2022



Asheville is the **112th** largest multifamily market with **20,014** completed units and **11,304** units in development, **1,971** of which have already broken ground.

New lease asking **rents** are at **\$1,595**, up **20.8% ▲** from the previous year placing Asheville at **8th** overall in year-over-year rent growth.

Multifamily housing **demand** has been rising with **682 ▲** net units absorbed over the past twelve months. This is down **-1,012 ▼** units from the previous year's gain of **1,694 ▲** absorbed units.

Employment in Asheville has grown by **4.6% ▲** over the past 12 months, while hourly wages have risen by **0.3% ▲** YoY to **\$26.77** according to the *Bureau of Labor Statistics*.

