

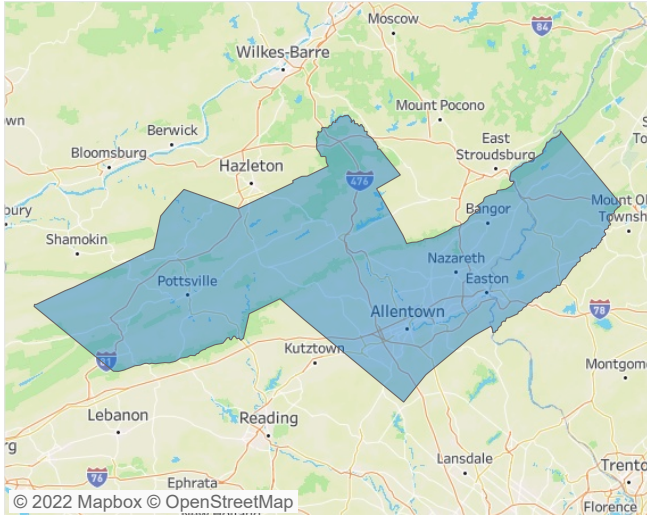


Contacts

Jeff Adler
Vice President
Jeff.Adler@yardi.com

Liliana Malai
Senior PPC Specialist
Liliana.Malai@yardi.com

Allentown-Bethlehem March 2022



■ Allentown-Bethlehem

■ National

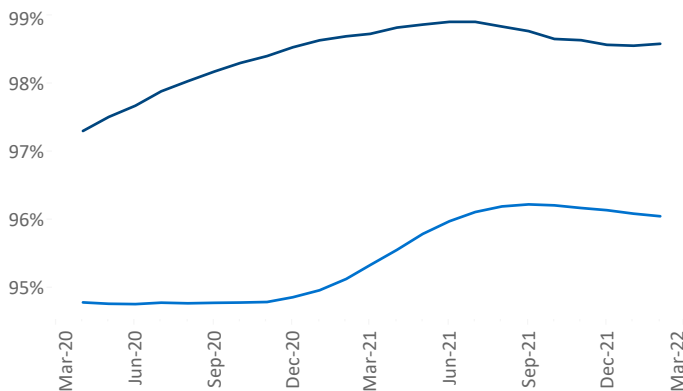
Allentown-Bethlehem is the **98th** largest multifamily market with **32,038** completed units and **6,674** units in development, **1,259** of which have already broken ground.

New lease asking **rents** are at **\$1,495**, up **14.5% ▲** from the previous year placing Allentown-Bethlehem at **40th** overall in year-over-year rent growth.

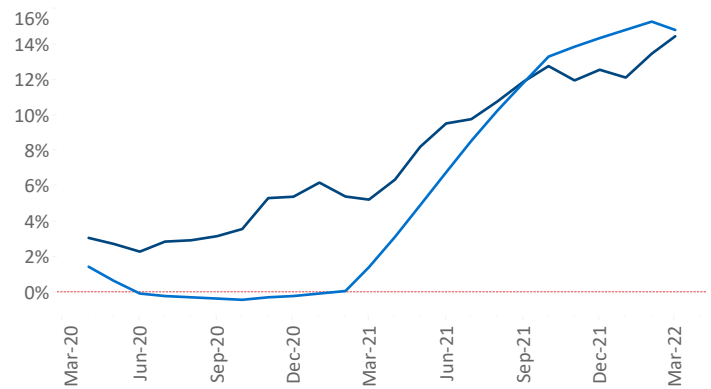
Multifamily housing **demand** has been rising with **235 ▲** net units absorbed over the past twelve months. This is down **-848 ▼** units from the previous year's gain of **1,083 ▲** absorbed units.

Employment in Allentown-Bethlehem has grown by **4.8% ▲** over the past 12 months, while hourly wages have risen by **1.0% ▲** YoY to **\$27.91** according to the *Bureau of Labor Statistics*.

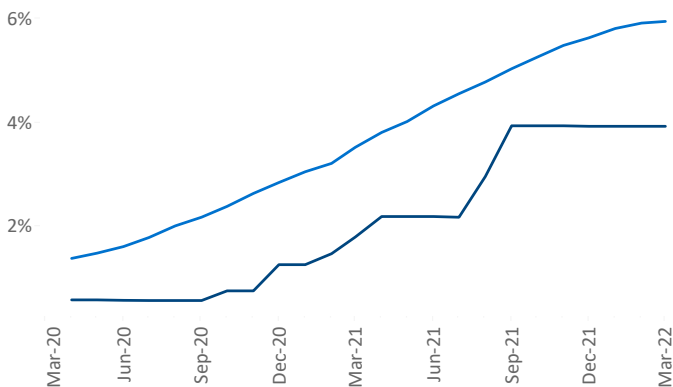
Occupancy



Rent Growth YoY



Units Under Construction as % of Stock



Absorbed Completions T12

